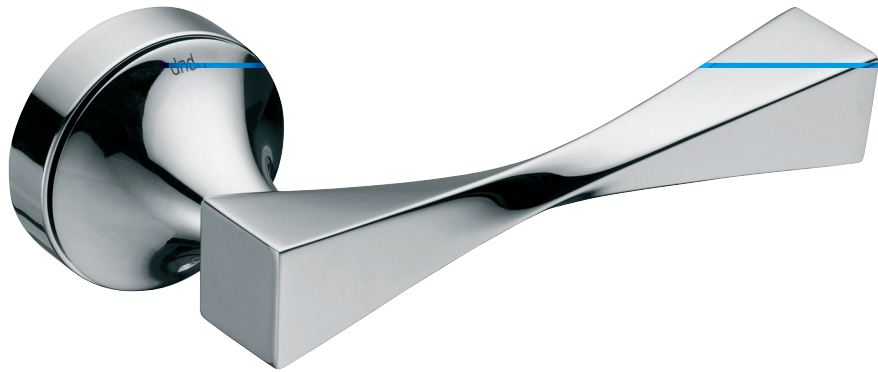


twist

design:
Karim Rashid

Ottone stampato a caldo
Hot stamped brass

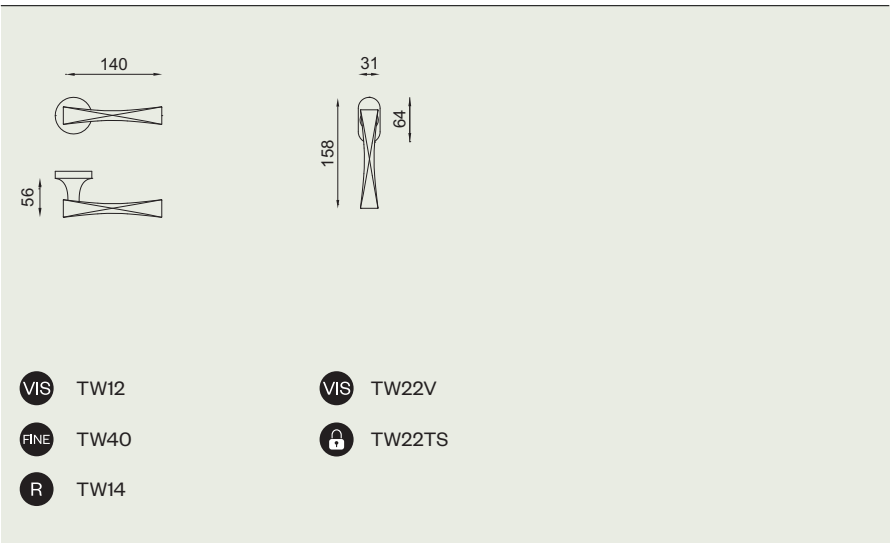


OC
Power cromo lucido
Power polished chrome

PCS
Power cromo satinato
Power satin chrome

ONS*
Nickel satinato
Satin nickel

*** su ordinazione / on demand**



TW14
OC

160-

dnd 2018/2019

161